



# Connect Freight eDIT System

## Smart Client Installation Instructions

### Document

# Table of Contents

1	Introduction .....	3
1.1	Project Background .....	3
1.2	eDIT Access and Integration .....	3
2	Smart Client Installation & Operation .....	4
2.1	Prerequisites .....	4
2.1.1	Hardware .....	4
2.1.2	Operating System .....	5
2.1.3	Internet Access .....	6
2.2	Installation Instructions .....	6
2.2.1	Install the NEW version of Smart Client (Downloaded ZIP Copy) .....	6
2.2.2	Setup the Proxy .....	10
3	Glossary .....	14
4	Appendix .....	15

# 1 Introduction

The purpose of this document is to describe the system pre-requisites and instructions related to the installation of the eDIT Smart Client.

## 1.1 Project Background

The Department of Transport has engaged EDS to implement an Electronic Documentation and Information Transfer (eDIT) system which aims to test the viability of a single system which will facilitate movement of containers through the Port of Melbourne by improving information flow in several specific areas.

eDIT will provide five core functions to the Port of Melbourne's containerised cargo supply chain:

- Vessel arrival and departure information.
- Berth booking.
- Hazardous cargo notification submission.
- Container status detail.
- Supply chain contact detail.

EDS are meeting this objective by providing a Port Community System (PCS) developed and in use by the Port of Valencia (PoV).

## 1.2 eDIT Access and Integration

Port community stakeholders will be able to access the eDIT functions via user interfaces provided by the following:

- Connect Freight *Web Portal*:
  - Vessel arrival and departure information.
  - Container status detail.
  - Supply chain contact detail.
- Connect Freight *Smart Client* application. A software application installed on a participant's computer system, enabling manual screen based entry into eDIT, of data related to:
  - Berth booking – Movement Orders, and Use Of Channels.
  - Hazardous cargo notification submission – Vessel level manifests, and Cargo level manifests (MO41)
- Connect Freight *Gateway Client* application. A software application installed on a participant's computer system, enabling automated transmission of data from the participant's existing systems to eDIT, of data related to:
  - Berth booking – Movement Orders, and Use Of Channels.
  - Hazardous cargo notification submission – Vessel level manifests, and Cargo level manifests (MO41)

## 2 Smart Client Installation & Operation

### 2.1 Prerequisites

#### 2.1.1 Hardware

Please ensure you have a computer that meets the minimum hardware requirements outlined below in figure 1. This information should be available in your computer's user manuals.

Type	Minimum	Recommended
Processor	400 MHz	800 MHz or above
Memory	96 megabytes (Mb)	256 megabytes (Mb) or above
Hard Disk Space	280 megabytes (Mb)	1 gigabyte (Gb)
Display	800 x 600 256 colours	1024 x 768 High Colour

*Figure 1 – Hardware Prerequisites*

## 2.1.2 Operating System

The minimum operating system pre-requisites for the smart client are:

- Microsoft Windows Vista **Or**
- Microsoft Windows XP with Service Pack 2 installed **Or**
- Microsoft Windows 2003 **Or**
- Microsoft Windows 2000 with Service Pack 4 installed

The operating system version can be checked by right – clicking on “My Computer” and selecting properties – see figures 2 and 3 below:

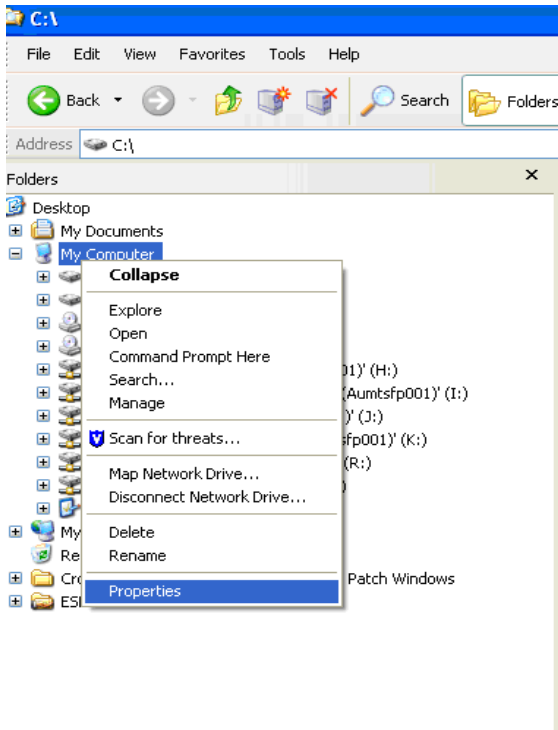


Figure 2 - Selecting "Properties"

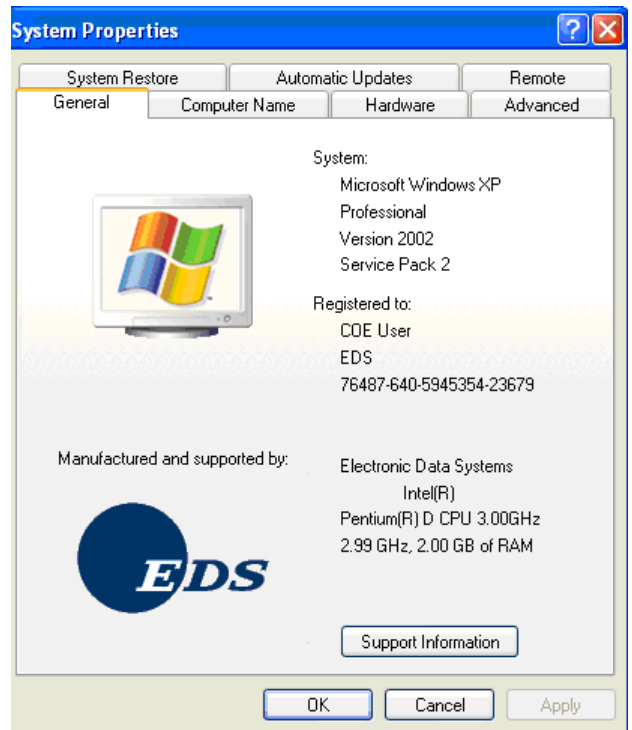


Figure 3 - The "System Properties Box"

## 2.1.3 Internet Access

### **Running the Smart Client & Receiving Automatic Software Updates**

Your PC should have standard access to the internet. Your PC must also be able to receive automatic downloads of software update files as per below.

The smart client uses HTTP to communicate with the server over the internet. The message format between the smart client and server uses XML/SOAP Protocols. These protocols should be enabled over any firewall used at your site.

### **Downloading the Smart Client & Receiving Automatic Software Updates**

If a firewall is installed on your PC or network the firewall must allow the following file types to be downloaded:

- .config (Smart Client configuration files)
- .exe (Smart Client program files)
- .dll (Smart client program library files)

## 2.2 Installation Instructions

Please follow the following steps to install the eDIT Smart Client.

### 2.2.1 Install the NEW version of Smart Client (Downloaded ZIP Copy)

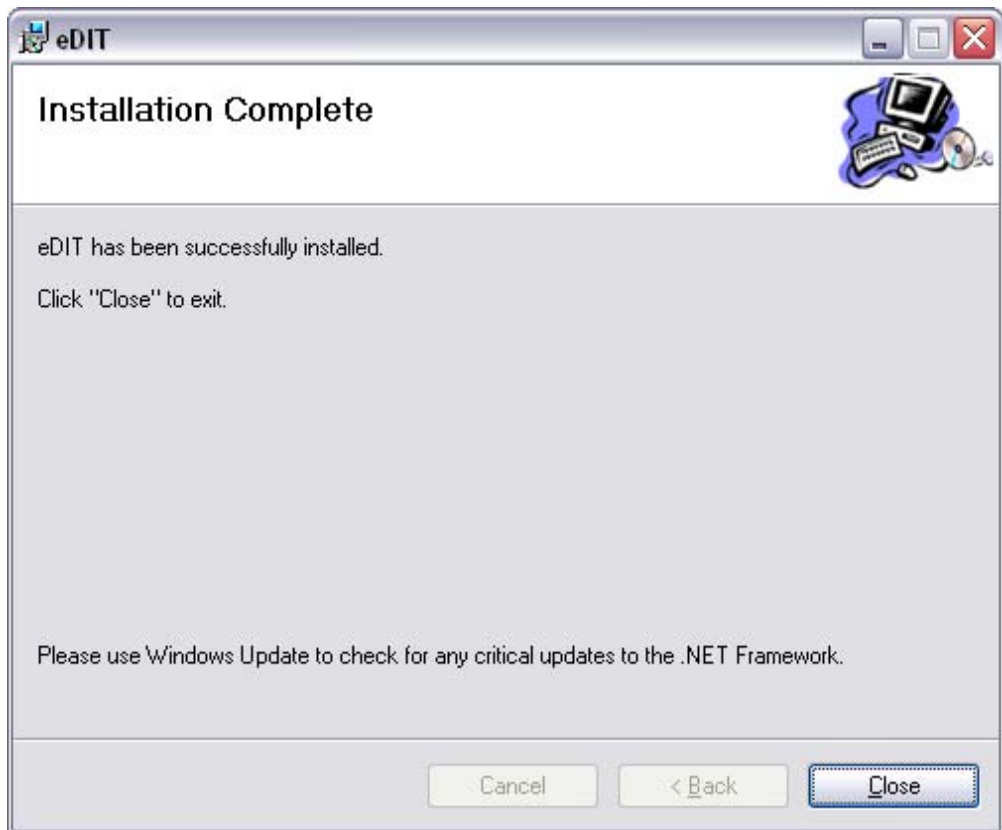
- Open the ZIP file using your default data compression program (Double clicking on it will open it with your default program)
- If you are using WinZip or WinRAR, double clicking on "setup.exe" will automatically extract all the files and run the installer. If you are not using one of these programs, you will need to extract all the contents of this zip file into any temporary folder of your choosing and then run "setup.exe".

- If you do not have .NET Framework 1.1 Installed, the setup will exit and the installation of the .NET Framework will begin. Once this is completed, you will need to restart the Smart Client installation by running "Setup.exe" again.



- The default settings should be fine, so click "Ok" or "Next" through the prompts to complete the installation.





- You can find the "connect Freight" shortcut under Start->All Programs->eDIT - Connect Freight



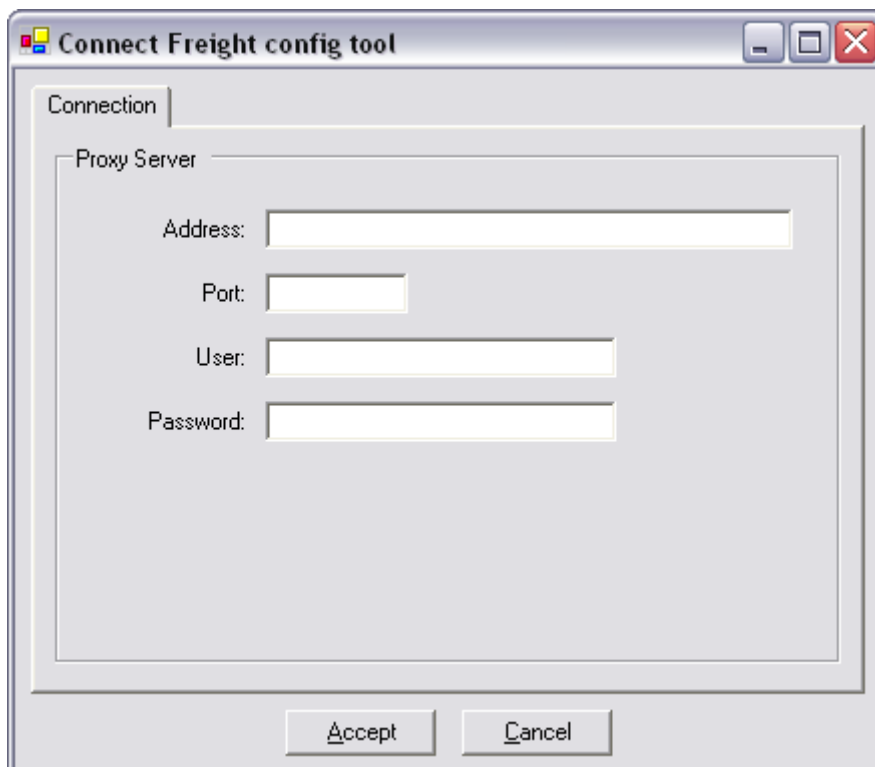
If you are behind a proxy (To connect to the internet, you need to go through a Proxy server to provide your internet access) please perform the steps in **2.2.2**.

## 2.2.2 Setup the Proxy

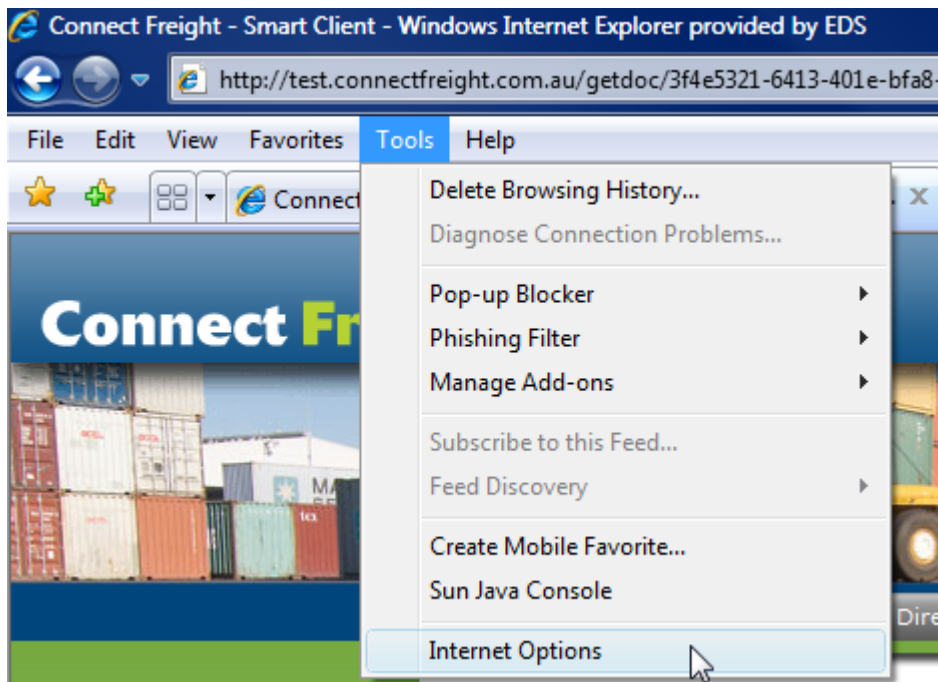
- Go Start->All Programs->eDIT - Connect Freight->Proxy ConfigTool

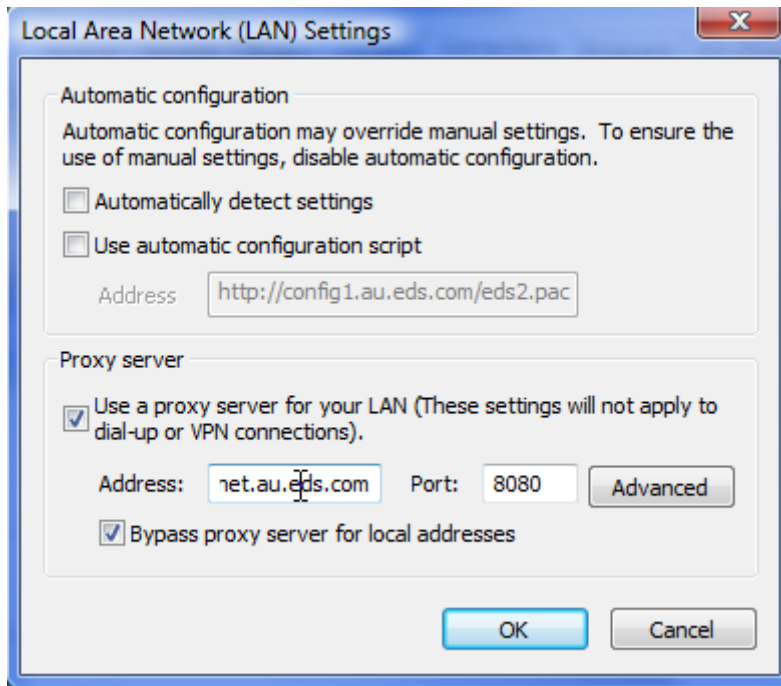
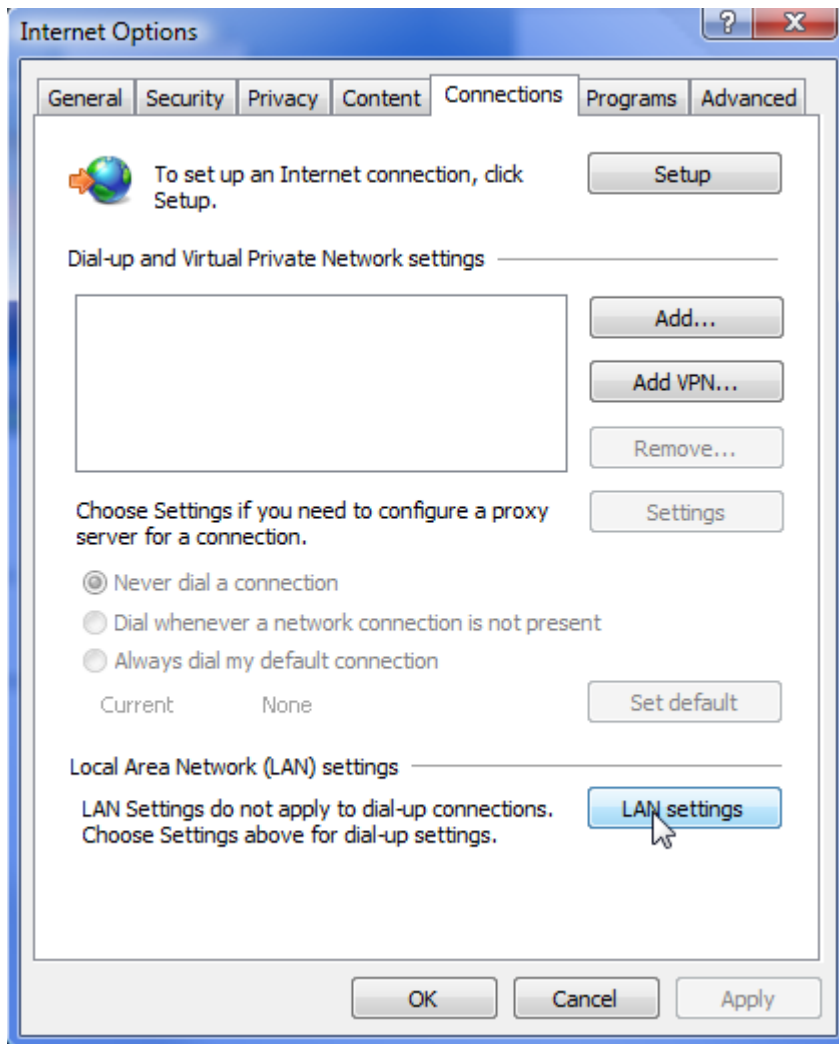


- You will be presented with a new window requesting a Proxy server address, a port number and log-in details. All will need to be entered in order to get the application to run properly.



- Proxy Address and Port Number can often be found in Internet Explorer. In Internet Explorer, go Tools->Internet Options Click on the "connections" tab, and click the button "LAN Settings". Click on the "Advanced" tab (If you cannot select it, you may need to check the box "Use a proxy server for your LAN..."). In there, you should be able to see a Proxy Server and a port number. Copy these values into the Smart Clients Proxy Settings.





- The username and password will NOT be your Smart Client credentials, they will be the ones you use on your own network to either log in to your computer or access the internet.

# 3 Glossary

TERM	DEFINITION / COMMENTS
DOT	Department of Transport
eDIT	electronic Documentation and Information Transfer
PCS	Port Community System
PoMC	Port of Melbourne Corporation
PoV	Port of Valencia

# 4 Appendix

APPLICATION FOLDER	FILE LISTING
eDIT Smart Client components	AxInterop.SHDocVw.DLL AxInterop.SHDocVw.zip eDIT.Application.exe eDIT.Application.zip eDIT.Client.Berth.dll eDIT.Client.Berth.Forms.dll eDIT.Client.Berth.Forms.zip eDIT.Client.Berth.zip eDIT.Client.ControlPanel.dll eDIT.Client.ControlPanel.zip eDIT.Client.dll eDIT.Client.Forms.dll eDIT.Client.Forms.zip eDIT.Client.LookUp.dll eDIT.Client.LookUp.zip eDIT.Client.TradeDirectory.dll eDIT.Client.TradeDirectory.Forms.dll eDIT.Client.TradeDirectory.Forms.zip eDIT.Client.TradeDirectory.zip eDIT.Client.zip eDIT.Common.Berth.dll eDIT.Common.Berth.zip eDIT.Common.dll eDIT.Common.TradeDirectory.dll eDIT.Common.TradeDirectory.zip eDIT.Common.zip eDIT.CommonValues.Library.dll eDIT.CommonValues.Library.zip eDIT.launcher.exe eDIT.launcher.zip eDIT.UI.Components.dll eDIT.UI.Components.zip HtmlHelp.dll HtmlHelp.zip HtmlHelpViewer.dll HtmlHelpViewer.zip Microsoft.ApplicationBlocks.ConfigurationManagement.dll Microsoft.ApplicationBlocks.ConfigurationManagement.Interfaces.dll Microsoft.ApplicationBlocks.ConfigurationManagement.Interfaces.zip Microsoft.ApplicationBlocks.ConfigurationManagement.zip Microsoft.ApplicationBlocks.Data.dll Microsoft.ApplicationBlocks.Data.zip

APPLICATION FOLDER	FILE LISTING
	Microsoft.ApplicationBlocks.ExceptionManagement.dll Microsoft.ApplicationBlocks.ExceptionManagement.Interfaces.dll Microsoft.ApplicationBlocks.ExceptionManagement.Interfaces.zip Microsoft.ApplicationBlocks.ExceptionManagement.zip NineRays.Basics.dll NineRays.Basics.zip NineRays.Reporting.dll NineRays.Reporting.Export.PDF.dll NineRays.Reporting.Export.PDF.zip NineRays.Reporting.zip R_eDIT.Application.exe.config R_eDIT.Application.exe.zip SharpZipLib.dll SharpZipLib.zip SHDocVw.dll SHDocVw.zip updatefiles.xml
eDIT Schemas	BERMANMEL.xsd codecoMEL.xsd VPDED95Bv10MEL.xsd VPDED96Bv10MEL.xsd